

Nordvest, Bispebjerg, Brønshøj-Husum

Jump on your bicycle and discover Nordvest, Bispebjerg and Husum-Brønshøj. Three neighbourhoods in Copenhagen that offer a variety of colourful stories and communities. Biking around the area, you will be able to experience interesting architectural details, dive into historic events, hang out in transformed industrial areas and take in the rich avifauna in green surroundings. From Copenhagen's oldest church to one of the most impressive churches in recent times, in a wonderful blend of residential neighbourhoods, ambitious public housing projects, fortifications and diverse residential areas.

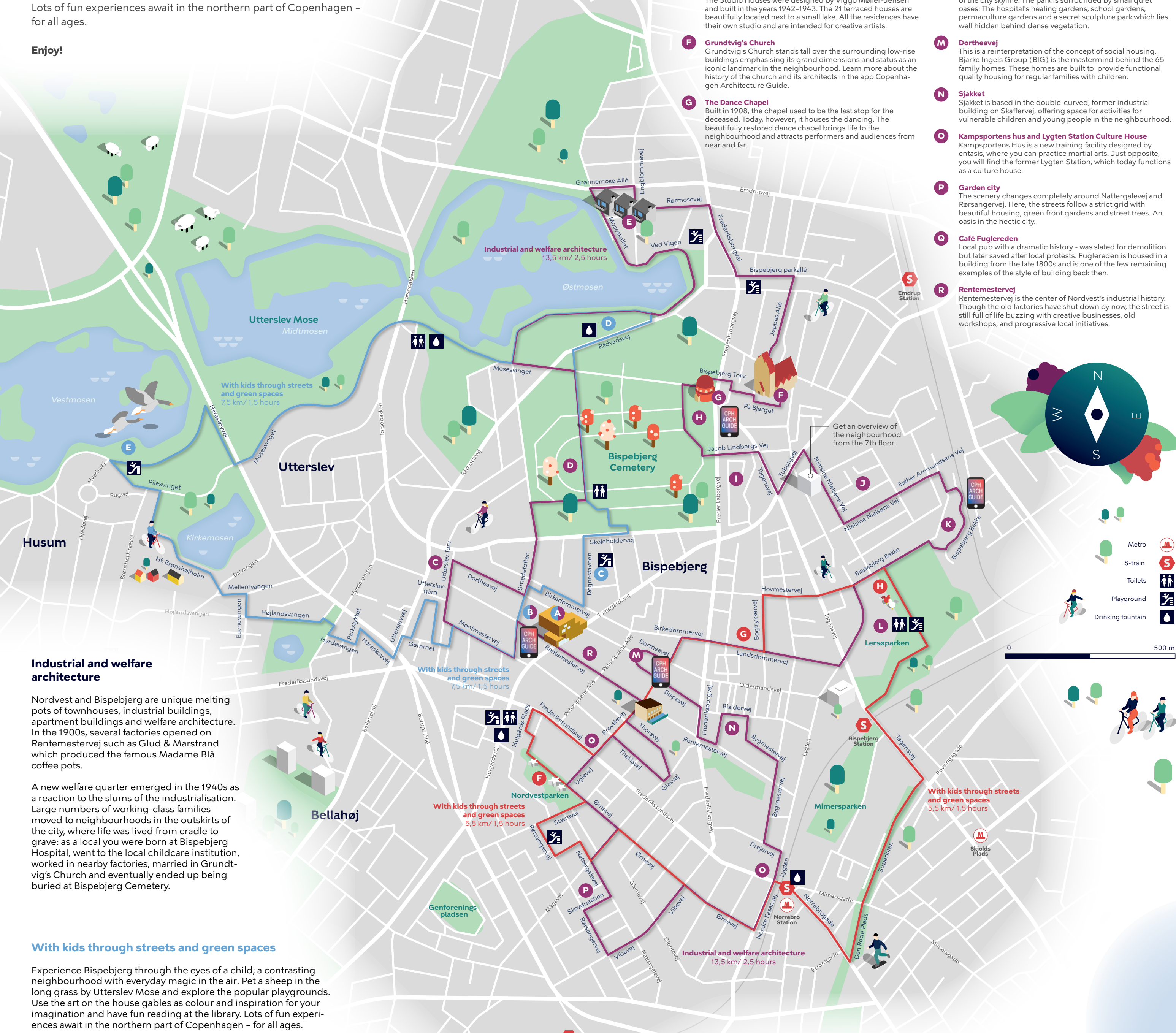
Lots of fun experiences await in the northern part of Copenhagen - for all ages.

Enjoy!

Industrial and welfare architecture

Copenhagen's Nordvest district is diverse and packed with history. Fuglekvarteret (the Bird Quarter) and its low-rise buildings with greenery are inspired by the English garden cities. On Rentemestervej, the remains of the old industrial quarter are still visible. The area surrounding Grundtvig's Church is well-planned with architectural parks. The district shows clear signs of the interwar period and the government's ambition to provide better quality of life to working-class families.

- A The LIBRARY**
The architecture of the LIBRARY is known for its stacked "books" in gold, which make the building sparkle at the top of Rentemestervej and thus stand out from the industrial buildings and apartment blocks which otherwise characterise the neighbourhood. Created by Cobe in 2011.
- B Smedestøften**
Gaze up at the 16 colourful gables on Møntmestervej and Rentemestervej, where passers-by can experience 2000 square meters of world-class street art every day around the clock. The street gallery exhibits both local and international artists.
- C Sokkelundlille**
Sokkelundlille was built in the 1890s by merchant Ludvig Emil Thrane. He built it on the site of a burnt down hunting lodge from 1770. It is said to have belonged to King Christian the 7th. The house functions as a culture house for children.
- D Bispebjerg Cemetery**
The blossoming cherry trees in April, the meticulously planted poplar trees along the wide avenues and a myriad of pathways makes this well-maintained cemetery worthy of a stroll.
- E The Studio Houses**
The Studio Houses were designed by Viggo Møller-Jensen and built in the years 1942-1943. The 21 terraced houses are beautifully located next to a small lake. All the residences have their own studio and are intended for creative artists.
- F Grundtvig's Church**
Grundtvig's Church stands tall over the surrounding low-rise buildings emphasising its grand dimensions and status as an iconic landmark in the neighbourhood. Learn more about the history of the church and its architects in the app Copenhagen Architecture Guide.
- G The Dance Chapel**
Built in 1908, the chapel used to be the last stop for the deceased. Today, however, it houses the dancing. The beautifully restored dance chapel brings life to the neighbourhood and attracts performers and audiences from near and far.
- H The Columbarium**
The Columbarium is the hidden gem of the cemetery. A beautiful building, where meticulously decorated urns with cremated remains from the deceased are stored and displayed in niches.
- I Bispeparken - welfare architecture**
Built in 1941, Bispeparken offered an alternative to the inner city slum. Here, the working class were offered balconies, space and access to green areas. According to The Cultural Heritage Board, this non-profit housing area is one of Denmark's finest park buildings.
- J Healing Gardens in Bispebjerg Hospital**
When Bispebjerg Hospital opened in 1913, sunlight, birdsong and access to the gardens were viewed as part of the treatment. The gardens have been restored as a soothing oasis for patients and visitors.
- K Bispebjerg Bakke**
The artist Bjørn Nørgaard designed this experimental construction of rental apartments manually. The building known as "the snake" brings together art, architecture and ambitious craftsmanship.
- L Lersøparken**
The 100-year-old park offers an open green space and a view of the city skyline. The park is surrounded by small quiet oases: The hospital's healing gardens, school gardens, permaculture gardens and a secret sculpture park which lies well hidden behind dense vegetation.
- M Dortehej**
This is a reinterpretation of the concept of social housing. Bjarke Ingels Group (BIG) is the mastermind behind the 65 family homes. These homes are built to provide functional quality housing for regular families with children.
- N Sjakket**
Sjakket is based in the double-curved, former industrial building on Skaffervej, offering space for activities for vulnerable children and young people in the neighbourhood.
- O Kampspørtens hus and Lygten Station Culture House**
Kampspørtens Hus is a new training facility designed by entasis, where you can practice martial arts. Just opposite, you will find the former Lygten Station, which today functions as a culture house.
- P Garden city**
The scenery changes completely around Nattergalvej and Rørsangervej. Here, the streets follow a strict grid with beautiful housing, green front gardens and street trees. An oasis in the hectic city.
- Q Café Fuglereden**
Local pub with a dramatic history - was slated for demolition but later saved after local protests. Fuglereden is housed in a building from the late 1800s and is one of the few remaining examples of the style of building back then.
- R Rentemestervej**
Rentemestervej is the center of Nordvest's industrial history. Though the old factories have shut down by now, the street is still full of life buzzing with creative businesses, old workshops, and progressive local initiatives.



Industrial and welfare architecture

Nordvest and Bispebjerg are unique melting pots of townhouses, industrial buildings, apartment buildings and welfare architecture. In the 1900s, several factories opened on Rentemestervej such as Glud & Marstrand which produced the famous Madame Blå coffee pots.

A new welfare quarter emerged in the 1940s as a reaction to the slums of the industrialisation. Large numbers of working-class families moved to neighbourhoods in the outskirts of the city, where life was lived from cradle to grave: as a local you were born at Bispebjerg Hospital, went to the local childcare institution, worked in nearby factories, married in Grundtvig's Church and eventually ended up being buried at Bispebjerg Cemetery.

With kids through streets and green spaces

Experience Bispebjerg through the eyes of a child; a contrasting neighbourhood with everyday magic in the air. Pet a sheep in the long grass by Utterslev Mose and explore the popular playgrounds. Use the art on the house gables as colour and inspiration for your imagination and have fun reading at the library. Lots of fun experiences await in the northern part of Copenhagen - for all ages.

- A The LIBRARY**
The children's library on the ground floor offers you fun with colourful children's books luring you with promises of a cosy reading time. On the first floor is a section for older children and young adults, where they can study and get help with their homework.
- B Smedestøften (push the bike)**
Stop the bike and walk for a bit while gazing up at the 16 colourful gables decorated by both local and international artists. This unique gallery is open around the clock and for everyone, consisting of 2,000 square meters of world class street art.
- C Degnestavnen's Playground**
Degnestavnen is a staffed playground and has a mix of open grounds, lush nature and hilly terrain. You can glide through the air on a double cable car, spin around on fun carousels, explore sensory trails and frolic in a giant sandbox landscape.
- D Streyf Nature Workshop**
Streyf is a municipal nature workshop with all you need to explore animal life, both in water and on land, also offering bonfires to cook meals. Near Streyf, you find a sheepfold. The sheep graze here during summer and help reduce invasive species.
- E The Bird Tower and Pirate Playground**
Fugletårnet (The Bird Tower) provides an unobstructed view of the area. Behind the playground, there is an obstacle course and a place to play out your pirate games.
- F Stjerneparken**
Hulgårds plads and Stjerneparken are located in Nordvestparken with great opportunities to play and have fun with various activities. The park consists of 4 simple basic elements - paths, trees, lights and cone-shaped mountain peaks.
- G Tagensbo School**
At the newly renovated school, there are plenty of activities from street sport and skate park to a pole forest, playhouse and parkour wall. Climb the stairs to the school's rooftop terrace for a sunny spot.
- H The School Gardens**
A stone's throw from the noisy traffic, Lersøparken offers plenty of space for play. In the summer, drop by the School Gardens, where the city's children get their hands dirty, tend the chickens and try out sowing and reaping.

Nordvest, Bispebjerg, Brønshøj-Husum

On 2 Wheels

Explore Copenhagen by bike



Section overview

0 5 km



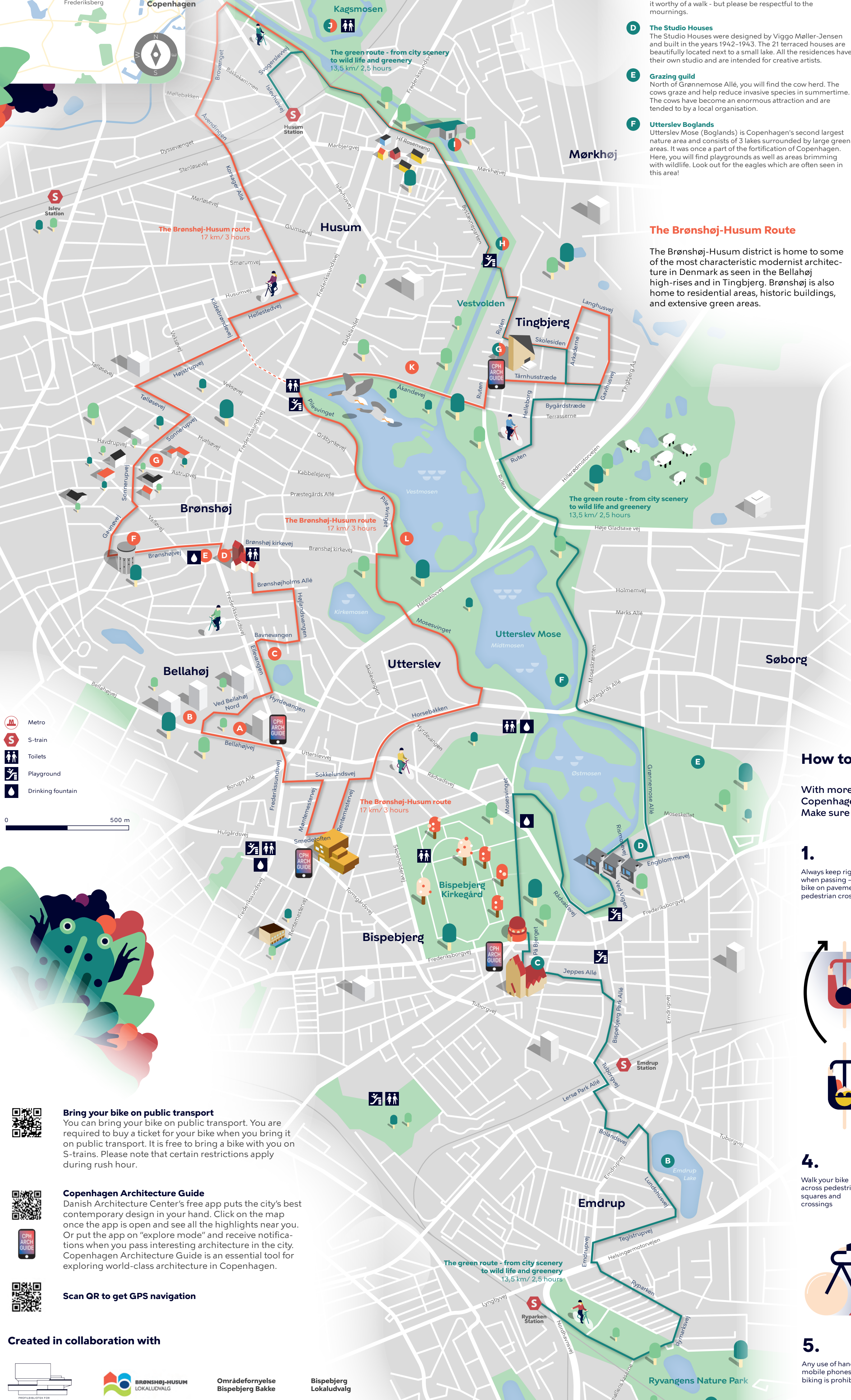
The green route - from city scenery to wild life and greenery

Experience the wings of history, beautiful nature gems, and breathtaking architecture on this green bike route with room and experiences for everyone. Pack your picnic basket and rest underneath one of the many shady trees or on the Western Ramparts. Explore fun playgrounds on the way, bring your binoculars, and study the rich avifauna in Utterslev Mose (Boglands). This trip offers many varied experiences.

- A Ryvangen Memorial Park**
Ryvangen Memorial Park (Mindelunden) is a hidden gem in the chaotic city. Take a stroll in the park's lush nature, see the flourishing pergola and get an insight into the area's bleak history as an execution and burial site for Danish resistance units under World War II.
- B Emdrup Lake**
Emdrup Lake is part of a larger water system, which connects from Utterslev Boglands through Søborghusenden. Here, the water is cleaned and led by pipeline to the Inner Lakes in Copenhagen. The lake was used as a reservoir for citizens back in the 1500s.
- C Grundtvig's Church / Bispebjerg Cemetery**
At Bispebjerg Cemetery, cherry trees bloom in April, and poplar trees tower along the avenue, leading towards Grundtvig's Church. The cemetery's myriad of footpaths make it worthy of a walk - but please be respectful to the mournings.
- D The Studio Houses**
The Studio Houses were designed by Viggo Møller-Jensen and built in the years 1942-1943. The 21 terraced houses are beautifully located next to a small lake. All the residences have their own studio and are intended for creative artists.
- E Grazing guild**
North of Grønnemose Allé, you will find the cow herd. The cows graze and help reduce invasive species in summertime. The cows have become an enormous attraction and are tended to by a local organisation.
- F Utterslev Boglands**
Utterslev Mose (Boglands) is Copenhagen's second largest nature area and consists of 3 lakes surrounded by large green areas. It was once a part of the fortification of Copenhagen. Here, you will find playgrounds as well as areas brimming with wildlife. Look out for the eagles which are often seen in this area!



- G Tingbjerg // Tingbjerg Library and Culture House**
Tingbjerg is a modernist masterpiece designed by Steen Eiler Rasmussen. Its construction started in 1959. It was developed as an independent and closed 'village' with a church, shops and institutions. Tingbjerg has gone from an area with mainly social housing to becoming a diverse and mixed, both public and private, housing stock. In 2018, the award-winning building, Tingbjerg Library and Culture House designed by Cobe was completed in the neighbourhood.
- H Vestvolden rampart complex**
The rampart complex is approx. 13 km in length and extends from Utterslev Mose all the way to Avedøre. It was built from 1888-1892 as part of the fortification of Copenhagen to ward off attacks on the city. This project is one of the biggest construction projects in Danish history.
- I Double Caponier**
Caponiers - bunker-like builds - have been placed along the rampart. They were an essential part of the fortification because they enabled the shooting of enemies who tried to cross. Double caponiers made it possible to shoot in both directions.
- J Kagsmosen**
Kagsmosen is an idyllic gem with diverse avifauna (bird wildlife). Most of this protected natural area is placed on an island which is not accessible. A path surrounds the island and if you are lucky, you may even spot a common kingfisher or hear a frog croaking.



The Brønshøj-Husum Route

The Brønshøj-Husum district is home to some of the most characteristic modernist architecture in Denmark as seen in the Bellahøj high-rises and in Tingbjerg. Brønshøj is also home to residential areas, historic buildings, and extensive green areas.

- A The Bellahej high-rises**
Denmark's first high-rises and classic examples of the modernist style of architecture were constructed in the 1950s.
- B Bellahejparken**
The district of Bellahøj is the highest "peak" in Copenhagen with its 37 metres. The park houses an Open Air Scene constructed with leftover dirt from the high-rises in the 1950s. The stage is Copenhagen's only amphitheatre and can accommodate 2000 guests.
- C The English Garden City**
The housing district from 1922 is inspired by the English garden city movement, whose objective was to improve the living standard of working-class families. The garden city was constructed to create better and healthier living conditions for regular families.
- D Brønshøj Church**
Constructed by Bishop Absalon in the romantic style in the 1180s, the church is Copenhagen's oldest building. The steeple was added in 1450.
- E Brønshøj Torv**
The cavalry school was established in 1722 and is one of 240 in the entire country. On the small hill overlooking Brønshøj Torv is a sculpture depicting three tents. The sculpture commemorates the Swedish siege of Copenhagen, where they established a temporary settlement using tents in Bellahøj in 1659.
- F Brønshøj Water Tower**
The 34 meters tall water tower from 1928 is a listed functionalist building, which no longer stores water. Since 2011, it has been used for concerts and other cultural events.
- G Residential area**
The area is characterised by residential neighbourhoods stretching from Bellahøj all the way to the city limits. The first residences were built west of Bellahøj, closest to the city, and slowly the area towards Husum was developed.
- H EnergiCenter Voldparken**
The school was built in 1952 and designed by functionalist architect Kay Fisker. It is considered one of his greatest masterpieces. The school was closed in 2008 and is now functioning as a cultural centre with an array of sports and leisure activities.
- L The Bird Tower**
Utterslev Boglands has a diverse avifauna. From the bird tower you can see large parts of Vestmosen. You might be lucky enough to see a Mediterranean gull on Mågeøen (Gull Island) or a white-tailed sea eagle, which often stages on Teglhølmøen (Tegholm Island). The bird tower has information on the birds of the bog.

How to bike in Copenhagen

With more than 386 km of bike lanes to explore, Copenhagen is best experienced on two wheels. Make sure to read the following tips before exploring.

- 1.** Always keep right - except when passing - and don't bike on pavements and pedestrian crossings
- 2.** Raise your hand to signal a stop. Signal right or left before turning.
- 3.** When turning left in a traffic light, bike through the intersection - stop - then wait for green light before you cross to the left.
- 4.** Walk your bike across pedestrian squares and crossings
- 5.** Any use of handheld mobile phones while biking is prohibited.

Bring your bike on public transport
You can bring your bike on public transport. You are required to buy a ticket for your bike when you bring it on public transport. It is free to bring a bike with you on S-trains. Please note that certain restrictions apply during rush hour.

Copenhagen Architecture Guide
Danish Architecture Center's free app puts the city's best contemporary design in your hand. Click on the map once the app is open and see all the highlights near you. Or put the app on "explore mode" and receive notifications when you pass interesting architecture in the city. Copenhagen Architecture Guide is an essential tool for exploring world-class architecture in Copenhagen.

Scan QR to get GPS navigation

Created in collaboration with

